

QPR CostControl Version 6



QPR CostControl: the magic

- Why customers need an ABC package ?
- Why CostControl ?
- Why do customers like the PG CC combination ?
- What about Scorecard ?



Why an ABC package ? : as basic as a bookkeeping

- Bookkeeping does not give the right analytical information
- Bookkeeping too rigid: no scenario analysis
- ABC shows a different angle
- Helps to focus on true cost-drivers
- Helps to focus on capacity usage instead of only the money
- Has become a de-facto standard for cost-accounting

The answer is simple:

“ABC software is as basic a bookkeeping software”



Reason 1

“CostControl is the smartest calculation engine you can get today”



- **Multi layer, User specific**
- **Multiple rules (cash, usage, capacity)**
- **Full Pull calculations, forecasting capacity**
- **Budgeting capabilities**
- **Calculated attributes**

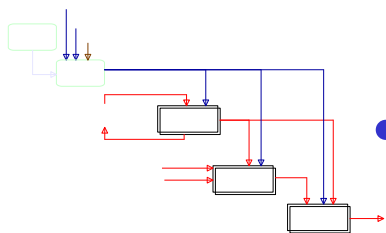


Reason 2

“CostControl is very open to other data sources”



- **Task list for Import, SQL and Export automation**
- **Very user friendly wizard-style interface**
- **Highly appreciated by end-users**
(can make interfaces without the help of IT)
- **Any flat file and or ODBC compliant data source can be imported**
(F.e. an OROS database in MS Access)
- **Graphical input from process modeling tools**
(QPR ProcessGuide)



Reason 3

“CostControl makes allocations transparent to end users”

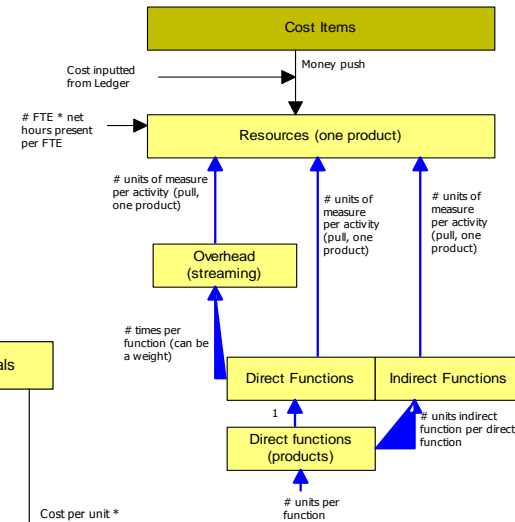
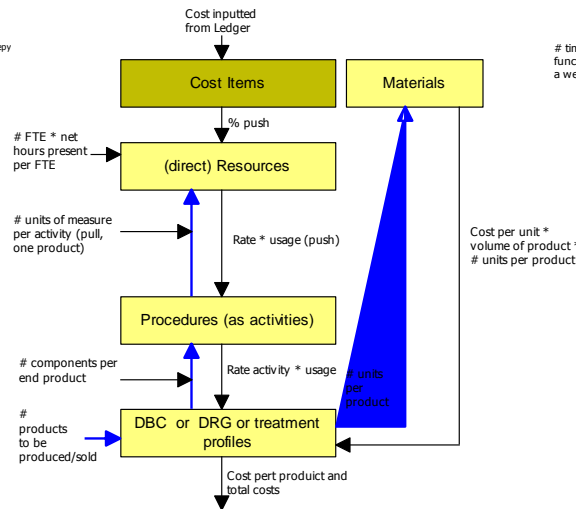
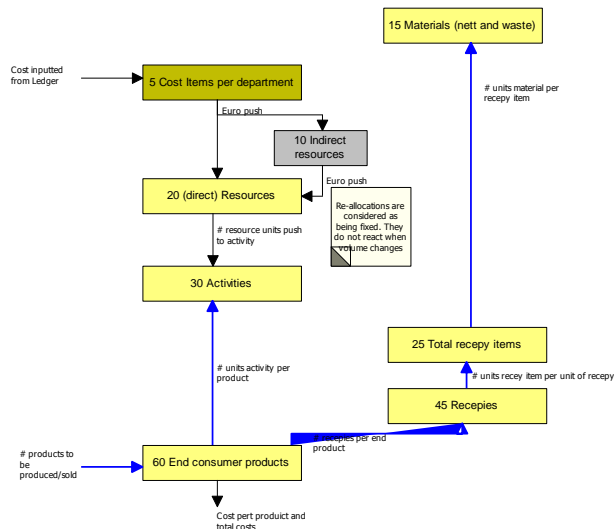


- **Drill-up and Drill Down capabilities**
- **Matrix style allocation window**
- **Fully customizable**
- **Build in validation report**
- **Detailed information in Log files**



Reason 4

“CostControl users design their own calculation method”



“CostControl has true Multi-user capabilities”



- Client server architecture
- Build in user management system
- User rights on several levels
- Lowest level: Object level



Reason 6

“Flexible reporting using powerful report generator”



- Drill-up and down custom made reports
- Made by end-user
- Fully adjustable
- Capable of doing extra calculations



Reason 7

“CostControl: build on IT industrial standards”



- JAVA, J2EE
- JAVA Webstart
- Multi-tier
- JBoss application server
- MySQL, Oracle and SQL server



Reason 8

“CostControl BV is fully focused and dedicated to the product”



- CostControl is our main product
- Short lines to development
- True functionality, based on input from our clients and partners



Reason 9

“CostControl has a good price performance ratio”



- Stand alone: € 12.000
- Average installation: € 22.000 - € 30.000
- No extra charges for databases or reporting tools
- Low implementation costs (User focused)
- Only 20% maintenance fee each year



Reason 10

“CostControl is used by 300 organizations every day”

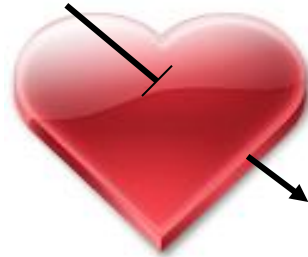


- 80 Hospitals in Netherlands, Finland, Sweden
- Government of New South Wales
- Ministry of Foreign Affairs NL
- Immigration office Finland
- Redbanc: Central Credit Card organization of Chili
- Aegon
- Achmea Health
- VGZ Zorgverzekeraars
- PostMail (Switzerland)
- De Lage Landen Trade Finance
- Delta Lloyd
- KPN
- Coca Cola Sweden
- KLM
- Bols Royal Distilleries
- SKF
- Bahrain Telecom
- Qualitynet Kuwait
- Telia Sweden
- OFTA Hong Kong



Conclusion

“We believe CostControl is the most functional ABC tool you can get on the market today”



“We believe that the total cost of ownership with CostControl is the lowest in market”



Other options with CostControl

Integration with process management

- ProcessGuide
- Costs flows in same chart as process flows
- Fully transparent input to CostControl



DEMO

Integration with Scorecard

- QPR scorecard
- Fedded by CostControl (variance analysis)
- Scores back to the process-and cost model



QPR CostControl Version 6 Some new features



Control center: easy startup

QPR CostControl Control Center

Launch Center

Administrator standalone client
This will start QPR CostControl in standalone administrator mode

User standalone client
This will start QPR CostControl in standalone, regular user mode

Alternative launch options:

- Administrator client**
Start the administrator client
- User client**
Start the regular user client
- Web client**
Start the html client
- Server**
Start the server
- Java Web Start admin client**
Start the Java Web start

Configuration Center

Configuration Manager
This will start QPR CostControl Configuration Manager.
This will allow you to configure QPR CostControl

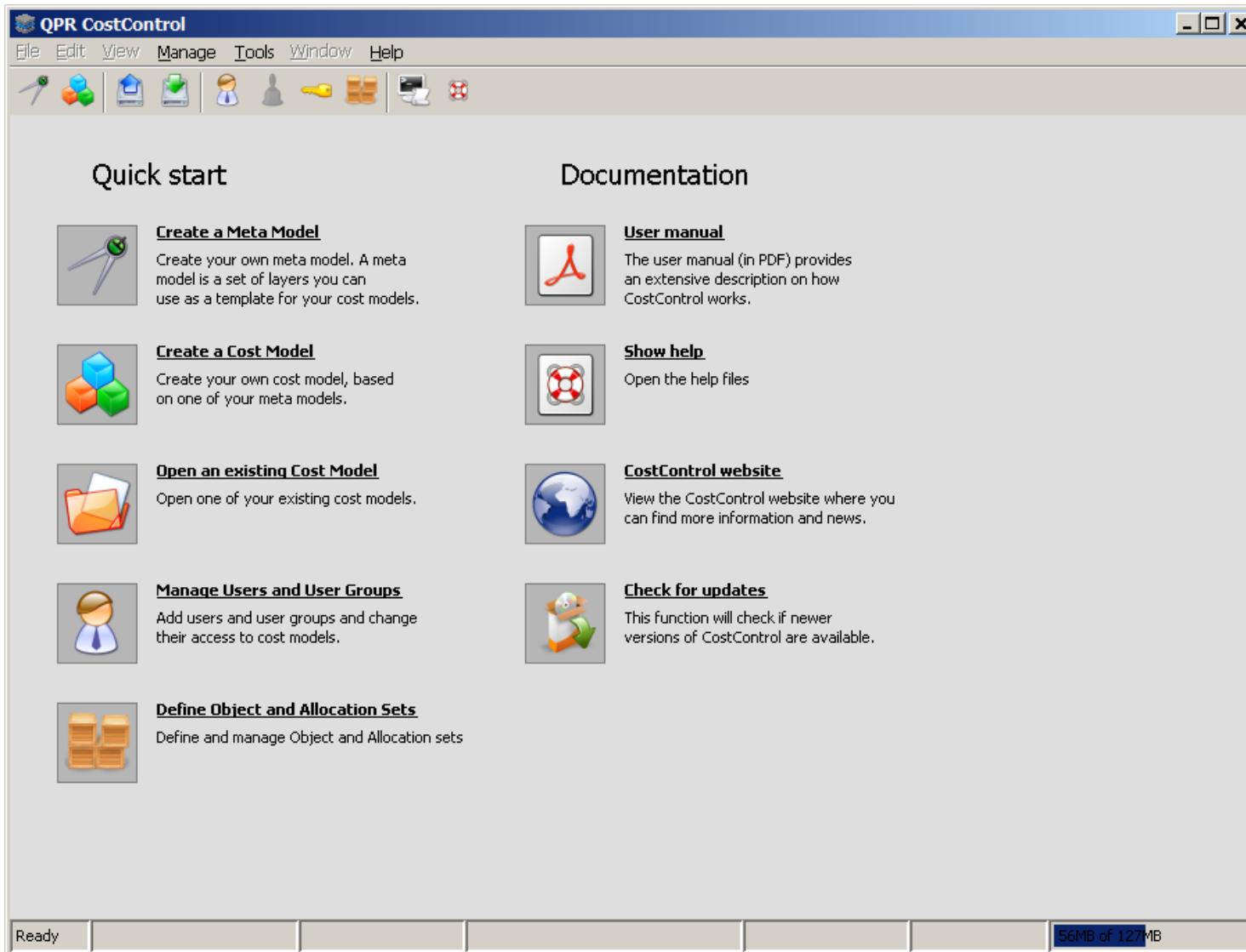
License Manager
This will start QPR CostControl License Manager.
This will allow you to add or manage licenses

Alternative configuration options:

- Database Backup**
Create a backup of the QPR CostControl database
- Database Restore**
Restore a backup or create an empty database
- Install Service**
Install the QPR CostControl server as a Windows service
- Start Service**
Start the service for the QPR CostControl server
- Stop Service**
Stop the service for the



Navigator: step by step



Graphical object browser: transparency

The screenshot displays the QPR CostControl interface for a beer model. On the left, a tree view shows the hierarchy: 01 beer model > Products [P0100] > Dark beer [P0102]. The central area shows a diagram where various cost objects are connected to the 'Dark beer [P0102]' node. A red circle highlights the object 'Dark beer in USA sold to resellers (763) [T0002]' with a value of 182,227.94. A red arrow points from this object to the text below.

Attribute	Value
Symbol	P0102
Name	Dark beer
Allocation Level	True
Capacity	0.00
Unit	Per Crate
Cost driver	Total Usage (volume)
Distribute by	
Direct Volume	121.00
Direct Cost	0.00
Result Set Att...	
Costs per unit o...	452.02
Costs per unit o...	0.00
Total Incoming ...	7,015,775.82
Total Costs	7,015,775.82
Total Usage (vo...	15,521.00
Total Outgoing ...	7,015,775.82

Object	Value
Produce products per batch [A0102]	2,724,109.62
Pack products [A0103]	1,566,498.70
Wheat [M0101]	1,086,470.00
Taste ingredients [M0103]	977,823.00
Setup a batch [A0101]	385,069.05
Store products [A0200]	131,788.81
Crates [M0201]	77,925.99
Keep books [A0402]	56,906.35
Water [M0102]	7,375.58
Pallets [M0202]	1,808.72
Dark beer [P0102]	6,833,542.88
Dark beer in USA sold to resellers (763) [T0002]	182,227.94
Dark beer in USA sold to resellers (763) [T0003]	

Click on any object to explore its environment !

Webclient: data entry, browse and calculate

Remote calculation

QPR CostControl 5 Web Applicatie

U bent aangemeld als user [Vernieuwen] [Afronden]
Het geselecteerde costmodel is 01 Beer model (Periode 2006) [Bereken model]

Bekijk objecten | Bewerk objecten | Bekijk allocaties | Bewerk allocaties

Symbol	Name	Direct Volume	Direct Cost
C0100	Salaries	0,00	12.000.000,00
C0101	Social costs	0,00	240.000,00
C0102	Pensions	0,00	24.000,00
C0200	Maintenance & depreciation	0,00	200.000,00
C0300	Housing costs	0,00	500.000,00
C0400	Support computers	0,00	110.000,00
C0500	Total raw material and packaging	0,00	7.500.000,00
C0600	Specials costs	0,00	0,00
C0601	Special flavours shipment costs	0,00	6.000,00
C0602	Cost of coating machine (per hour)	0,00	5.000,00
C0603	Procurement costs Specials (add. charge)	0,00	50.000,00
C0604	Direct blue coating costs	0,00	20.000,00
CI	CI	0,00	0,00

Symbol	Name	Direct Volume	Direct Cost
P0100	Products	0,00	0,00
P0101	Light beer	0,00	0,00
P0102	Dark beer	0,00	0,00
P0103	Special beer 1 HL =160 crates	0,00	0,00

Klaar

Results are shown after refresh

PS : the web client takes the default language setting from the browser !

Java-webstart: distributed deployment

The image displays the QPR CostControl Control Center interface (version 6.0) and a Java Web Start dialog box. The Control Center window is divided into two main sections: "Opstart opties" (Startup options) and "Configuratie opties" (Configuration options). Under "Opstart opties", there are two standalone client options: "Administrator standalone client" and "User standalone client". Under "Configuratie opties", there are "Configuratie Manager" and "Licentie Manager". A sidebar on the right lists "Alternatieve opstart opties" (Alternative startup options) and "Alternatieve configuratie opties" (Alternative configuration options). The "Java Web Start admin client" and "Java Web Start user client" options are circled in red. A red arrow points from the "Java Web Start user client" option to a "Java Web Start" dialog box. The dialog box shows the application name "QPR CostControl QPR CostControl BV" and a progress bar with the text "Starting application...". A second red arrow points from the dialog box to the "QPR CostControl" application window. The application window has a menu bar (File, Edit, View, Manage, Tools, Window, Help) and a "Quick start" section with options like "Create a Meta Model", "Create a Cost Model", "Open an existing Cost Model", "Manage Users and User Groups", and "Define Object and Allocation Sets". A "Documentation" section includes links for "User manual", "Show help", "CostControl website", and "Check for updates".

**Full functional client !
Requires only a local Java Runtime installation.**

